



شركة سي جي سي للمصاعد والسلالم الكهربائية المحدودة
CGC for Elevators and Escalators Co Ltd.

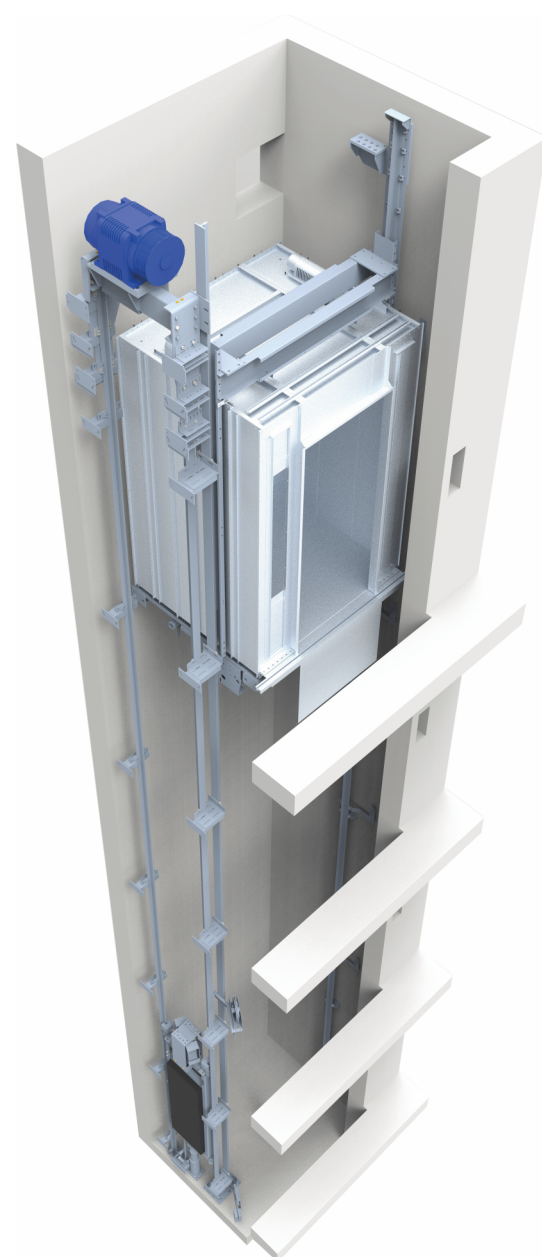
Your Reliable Partner in **Elevators** & Escalators

Solutions

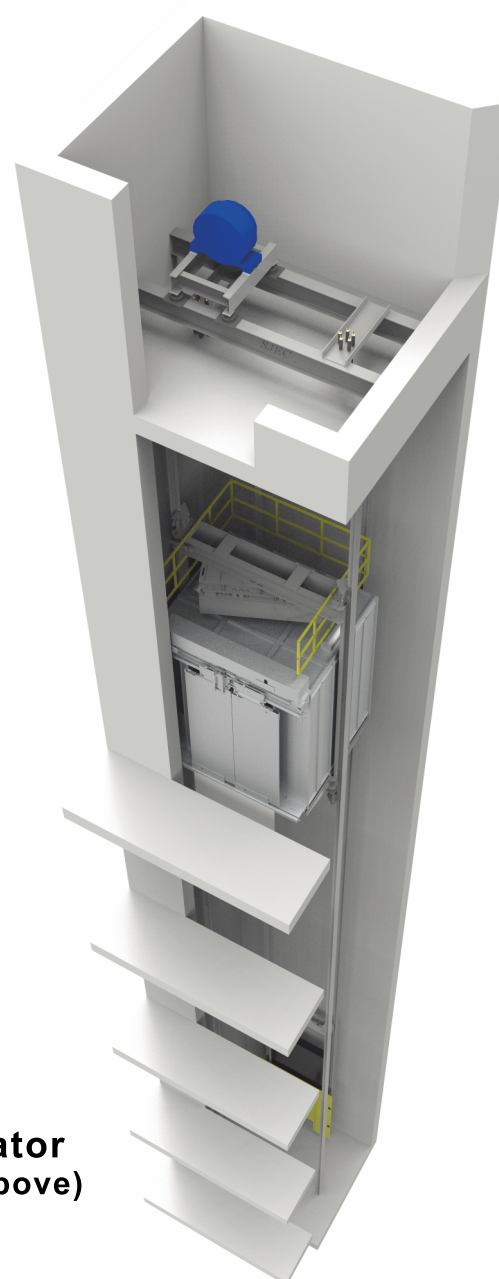
Reaching new heights



ا ل م a ea ce l- a rawa str ct - . 2 7 a 542
www.cgc-elevators.sa
920009457



CGC-MRL elevator
(elevator without machine room)



CGC-MRA elevator
(elevator with machine room above)

Advanced Control system



VVVF driving technology: Variable-Voltage-Variable-Frequency technology reduces power consumption and improves running precision and leveling accuracy.

All-IN-ONE design: highly integrated motor driving and logic control unit, not separated inverter and control board, improve efficiency and reliability.

Auto-wakeup: Automatically hibernation will reduce power consumption prominently during elevator standby. Auto-wakeup elevator saves 90% power consumption during standby.

Energy generation function available: energy generated during braking feeds back to the power supply could save by 20%~40% energy comparing with traditional braking resistor method.

EMC design: our control system fully complies with EN12015, EN12016 standards.

Smooth running curve: N-curve algorithm adopts distance control, it automatically calculates possible maximum speed according to different floor distance, makes landing directly without creeping.



Efficient Driving system

Our elevator uses permanent magnetic synchronized gearless traction machine. It has advantages of environmental protection, energy-saving, free-maintenance, safe reliability, high efficiency, low vibration, low noise and perfect ride comfort. It saves 30%~60% power consume comparing with traditional geared machine.



Safe in good quality

We use more than 100 protection design including mechanical and electrical to guarantee ultimate SAFETY. All main components we provided are from world-famous manufacturers.

Excellent performance

We pay much attention on passengers' comfort. It is considered much in design, such as vibration-absorption, smooth running / leveling and friend human-machine interface. Every type of our products shall be installed in our test tower. We use Physical Measurement Technologies Tools to analyze its performance. Before published into market, each of them shall be tested / developed for years until it's excellent and mature.



Car Style

Standard car



Wide Car

CEILING: SC-101
CAR WALL: Painted Steel Panel (RAL7035)
CAR DOOR: Painted Steel Panel (RAL7035)
FLOOR: PVC (type selected in FLOOR page)



Deep Car

CEILING: SC-103
CAR WALL: Painted Steel Panel (RAL7035)
CAR DOOR: Painted Steel Panel (RAL7035)
FLOOR: PVC (type selected in FLOOR page)

Optional car

Classical Series



JR-001 (Wide Car)

CEILING: SC-101
(painted steel + acrylic board, direction ventilation)
CAR WALL: Hairline Steel Panel
CAR DOOR: Hairline Steel Panel
FLOOR: PVC (type selected in FLOOR page)



JR-004 (Deep Car)

CEILING: SC-104
(painted steel + acrylic board, direction ventilation;
optional: emergency exit)
CAR WALL: Hairline Steel Panel
CAR DOOR: Hairline Steel Panel
FLOOR: PVC (type selected in FLOOR page)

Observation Lift



HC-101 Square

UPPER & LOWER COVER: Hairline ST/ST
CEILING: Hairline ST/ST, Acrylic board
CAR WALL: Hairline ST/ST, Laminated Glass
HANDRAIL: Hairline ST/ST
FLOOR: PVC (Optional: Marble)



HC-007 Semi-Circle

UPPER & LOWER COVER: Painted Steel, Lighting
CEILING: Painted Steel, Acrylic board
CAR WALL: Hairline ST/ST, Laminated Glass
HANDRAIL: Hairline ST/ST
FLOOR: PVC (Optional: Marble)



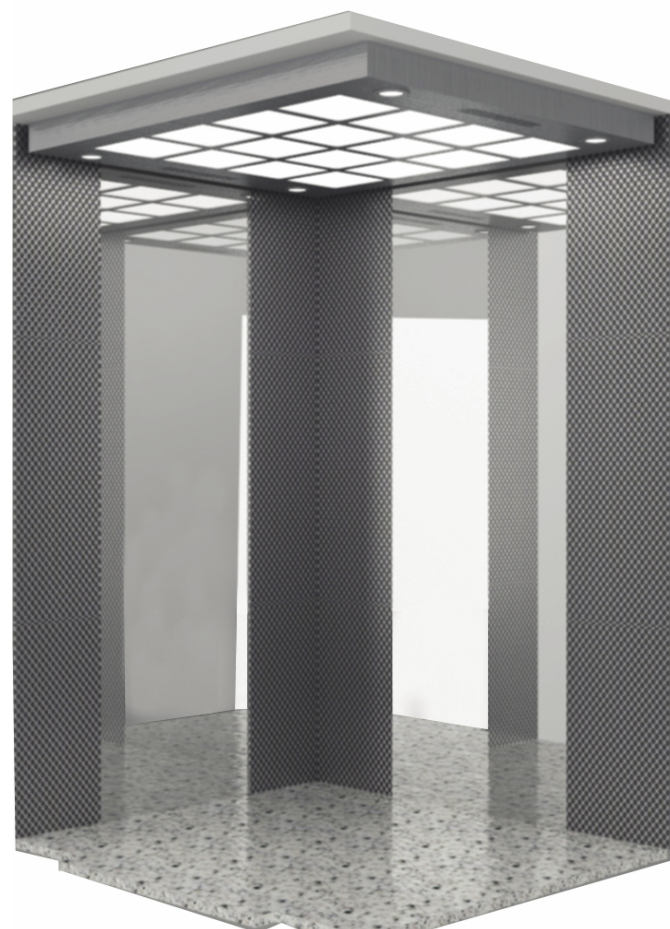
HC-012 Hexagon

UPPER & LOWER COVER: Painted Steel, Lighting
CEILING: Mirror ST/ST, Acrylic board
CAR WALL: Mirror + Etched ST/ST, Laminated Glass
HANDRAIL: Hairline ST/ST
FLOOR: PVC (Optional: Marble)



HC-010 Semi-Circle

UPPER & LOWER COVER: Painted Steel,
Quarter-Circular Acrylic Board, Lighting
CEILING: Painted Steel, Acrylic board
CAR WALL: Hairline ST/ST, Laminated Glass
HANDRAIL: Hairline ST/ST
FLOOR: PVC (Optional: Marble)



JR-101B

CEILING (height around 100 mm)
SC-112, Hairline ST.ST + Acrylic board + LED lighting & lamps

CAR WALL
Mirror ST.ST. (middle part) + Etched mirror ST.ST. HQ-21

FRONT RETURN
Mirror ST.ST.

CAR DOOR
Mirror ST.

FLOOR
Marble DS-005 (Optional)



JR-102B

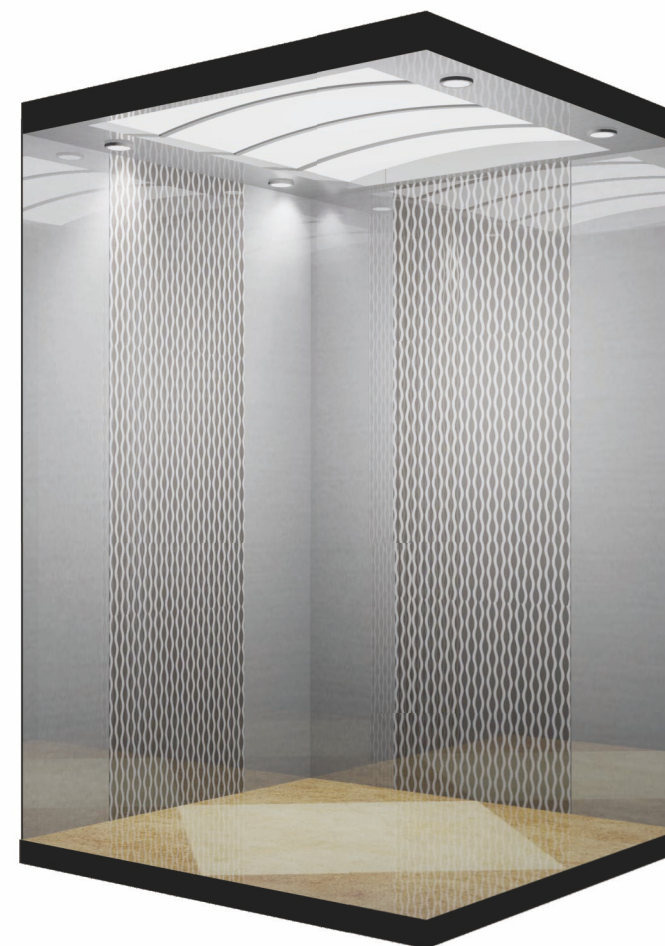
CEILING (height around 100 mm)
SC-101, gray painted steel frame + Acrylic board + LED lighting

CAR WALL
Etched mirror ST.ST. ES-003 (middle part) + Hairline ST.ST.

FRONT RETURN
Hairline ST.ST.

CAR DOOR
Hairline ST.ST. (Optional)

FLOOR
Marble DS-001 (Optional)



JR-103

CEILING (height around 150 mm)
DA630, Mirror ST.ST. + Acrylic board + LED lighting & lamps

CAR WALL
Etched mirror ST.ST. GY-055 (middle part) + Mirror ST.ST.

FRONT RETURN
Mirror ST.ST.

CAR DOOR
Mirror ST.ST. (Optional)

FLOOR
Marble DS-006 (Optional)



JR-104

CEILING (height around 100 mm)
SC-104, Golden-Ti hairline ST.ST. + Acrylic board + LED lighting & lamps

CAR WALL
Golden-Ti Etched mirror ST.ST. ES-002 (middle part) + Golden-Ti hairline ST.ST.

FRONT RETURN
Golden-Ti hairline ST.ST.

CAR DOOR
Golden-Ti hairline ST.ST. (Optional)

FLOOR
Marble FL-103 (Optional)





JC-002

CEILING (height around 150 mm)
SC-202 Dark-Ti Hairline ST.ST. + Acrylic board

FRONT RETURN
Mirror ST.ST.

CAR WALL
Side walls Mirror ST.ST. + Dark-Ti Hairline ST.ST.
Rear wall Etched Mirror ST.ST. + Dark-Ti Hairline ST.ST.

HANDRAIL
Round mirror ST.ST, at rear wall

CAR DOOR
Mirror ST.ST. (Optional)

FLOOR
Marble DS-007 (Optional)

* **NOTE:** when CW or CD >1600mm, the acrylic board in ceiling will be divided into 2 pieces with a middle frame.



JC-003B

CEILING (height around 150 mm)
SC-203 Mirror ST.ST. + LED lamps

FRONT RETURN
Hairline ST.ST.

CAR WALL
Side walls Hairline ST.ST.;
Rear wall Etched Mirror ST.ST. + Mirror ST.ST.

SKIRTING
Hairline ST.ST.

HANDRAIL
38mm Round mirror ST.ST, at side walls

CAR DOOR
Hairline ST.ST. (Optional)

FLOOR
Marble DS-008 (Optional)

* **NOTE:** light number may change per car size



JC-102

CEILING (height around 150 mm excluding lighting)
SC-502 Mirror ST.ST. + LED lamps

FRONT RETURN
Bronze-Ti Mirror ST.ST.

CAR WALL
Side walls Bronze-Ti Mirror ST.ST
Rear wall 3D Laminated sheet FM102.(Optional)

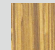



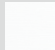
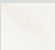

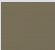
SKIRTING
Hairline ST.ST.

HANDRAIL
ST.ST, at side walls

CAR DOOR
Bronze-Ti Mirror ST.ST. (Optional)

FLOOR
Marble DS-009 (Optional)

Various laminated wall available

Wooden pattern		3D surface	
	FM088		FM089
	FM101		FM090
	FM102		FM091
	FM103		FM104

JC-103

CEILING (height around 150 mm)
SC-503 Mirror ST.ST. + LED lamps + Acrylic board

FRONT RETURN
Dark-Ti Mirror ST.ST.

CAR WALL
Dark-Ti Mirror ST.ST. + Etched Mirror ST.ST.

SKIRTING
Hairline ST.ST.

HANDRAIL
Hairline ST.ST, at rear wall

CAR DOOR
Dark-Ti Mirror ST.ST. (Optional)

FLOOR
Marble DS-010 (Optional)





JH-001

CEILING (height around 150 mm)
SC-301 Mirror ST.ST. + Etched mirror ST.ST. + LED

FRONT RETURN
Mirror ST.ST.

CAR WALL
Wooden surface. + Mirror ST.ST. + ST.ST. strip

SKIRTING
Hairline ST.ST.

CAR DOOR
Mirror ST.ST. (Optional)

FLOOR
Marble DS-001 (Optional)

JH-003

CEILING (height around 150 mm)
SC-303 Mirror ST.ST. + Acrylic board + LED lamps

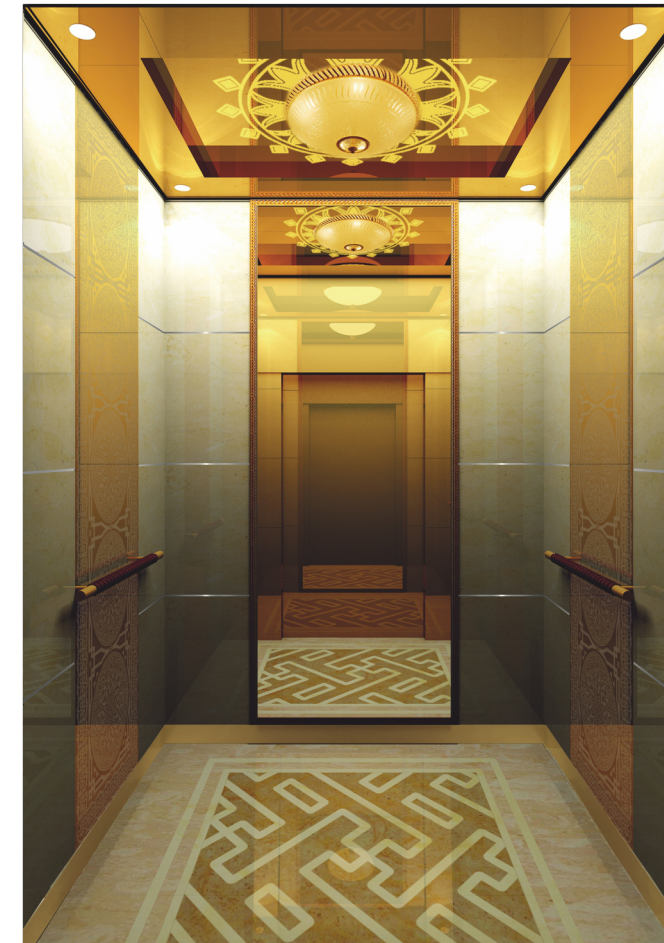
FRONT RETURN
Golden-Ti Hairline ST.ST.

CAR WALL
Golden-Ti Etched mirror ST.ST. (middle part) + Golden-Ti Hairline ST.ST.

HANDRAIL
Round Golden-Ti Hairline ST.ST., at 3 sides

CAR DOOR
Golden-Ti Hairline ST.ST. (Optional)

FLOOR
Marble DS-002 (Optional)



JH-004B

CEILING
(height around 150 mm excluding center lighting)
SC-304 Golden-Ti Etched mirror ST.ST. + Suspended lighting + Golden-Ti Mirror ST.ST. + LED lamps

FRONT RETURN
Golden-Ti Mirror ST.ST.

CAR WALL
Side walls Golden-Ti Etched mirror ST.ST. (middle part) + Marble with Silver ST.ST. strip
Rear wall Framed glass mirror (middle part) + Marble with Silver ST.ST. strip

SKIRTING
Golden-Ti Mirror ST.ST.

HANDRAIL
Round, Wooden surface + Golden-Ti Hairline ST.ST, at side walls

CAR DOOR
Golden-Ti Mirror ST.ST. (Optional)

FLOOR
Marble DS-003 (Optional)



JH-101B

CEILING: (height around 150 mm)
SC-504 Sand blasted ST.ST. + Mirror ST.ST. + LED lamps

FRONT RETURN
Golden-Ti Mirror ST.ST.

CAR WALL
Marble with brass color strip (middle part) + Golden-Ti Mirror ST.ST.

HANDRAIL
Round, Wooden surface + Golden-Ti Mirror ST.ST at rear sides

CAR DOOR
Golden-Ti Mirror ST.ST. (Optional)

FLOOR
Marble DS-011 (Optional)



VC-003

CEILING (height around 100 mm)
Golden-Ti Etched mirror ST.ST. + Acrylic board + LED lamps

CAR WALL
Golden-Ti Etched mirror ST.ST. + Sliver hairline ST.ST.

FRONT RETURN
Sliver hairline ST.ST.

HANDRAIL
Round Sliver hairline ST.ST., at rear side

CAR DOOR
Silver Hairline ST.ST. (Optional)

FLOOR
PVC

VC-005

CEILING (height around 60 mm)
Mirror ST.ST. + Acrylic board with backlight

FRONT RETURN
Hairline ST.ST.

CAR WALL
Side walls mirror ST.ST.+wood-like surface with ST.ST. strips.
Rear wall mirror ST.ST.

HANDRAIL
Round wooden surface + hairline ST.ST. handrail at rear wall

CAR DOOR
Hairline ST.ST. (Optional)

FLOOR
Marble (Optional)



VC-007

CEILING (height around 150 mm)
Golden-Ti mirror ST.ST + Golden- Ti etched ST.ST + LED lamps & light bar

FRONT RETURN
Golden-Ti mirror ST.ST

CAR WALL
Side Walls golden-Ti mirror ST.ST. + glass mirror
Rear Wall golden-Ti mirror ST.ST. + golden-Ti etched ST.ST.

HANDRAIL
Round golden-Ti ST.ST handrail at rear wall

CAR DOOR
Golden-Ti mirror ST.ST. (Optional)

FLOOR
Marble (Optional)



VC-008A

CEILING
(height around 150 mm excluding center lighting)
Champagne-Ti sandblasted ST.ST. frame + LED lamps + Champagne-Ti mirror ST.ST. + Suspended lighting

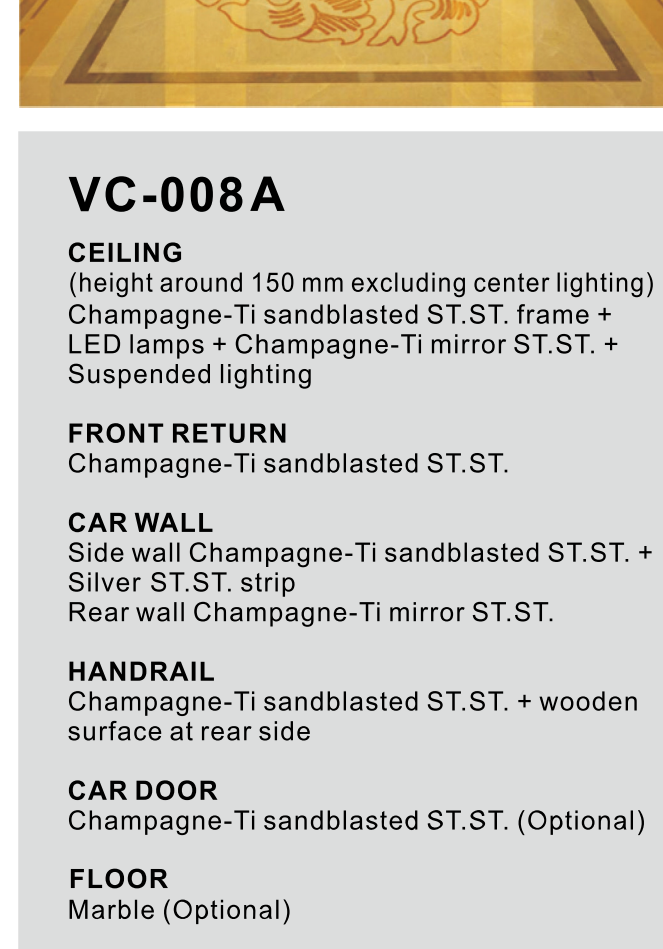
FRONT RETURN
Champagne-Ti sandblasted ST.ST.

CAR WALL
Side wall Champagne-Ti sandblasted ST.ST. + Silver ST.ST. strip
Rear wall Champagne-Ti mirror ST.ST.

HANDRAIL
Champagne-Ti sandblasted ST.ST. + wooden surface at rear side

CAR DOOR
Champagne-Ti sandblasted ST.ST. (Optional)

FLOOR
Marble (Optional)



Ceiling



SC-101(Standard for wide car)

Height 100mm;
Silver gray painted steel + Acrylic panel;
Direct ventilation



SC-103(Standard for deep car)

Height 100mm;
Silver gray painted steel + Acrylic panel;
Direct ventilation



SC-104(Optional)

Height 100mm;
Hairline ST/ST (Option: Mirror ST/ST) + Acrylic panel
+ LED lamps;
Direct ventilation; Emergency exit Available



SC-108(Optional)

Mini-height 70mm;
Hairline ST/ST (Option: Mirror ST/ST) + LED lamps;
Direct ventilation



SC-203(Optional)

Height 150mm;
Hairline ST/ST (Option: Mirror ST/ST) + LED lamps;
Hidden ventilation



SC-111(Optional)

Height 100mm;
Hairline ST/ST (Option: Mirror ST/ST) + Acrylic panel
+ LED lamps;
Direct ventilation; Emergency exit Available



SC-112(Optional)

Height 100mm;
Hairline ST/ST (Option: Mirror ST/ST) + Acrylic panel
+ LED lamps;
Direct ventilation; Emergency exit Available



SC-113(Optional)

Height 100mm;
Hairline ST/ST (Option: Mirror ST/ST) + Acrylic panel
+ LED lamps;
Direct ventilation; Emergency exit Available

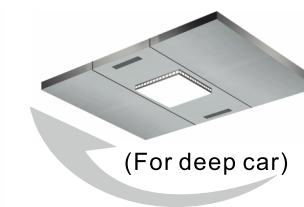


SC-114(Optional)

Height 100mm;
Hairline ST/ST (Option: Mirror ST/ST) + Acrylic panel
+ LED lamps;
Direct ventilation; Emergency exit Available



(For wide car)



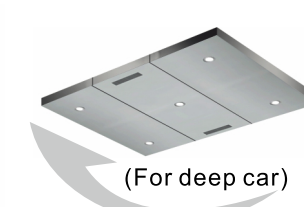
(For deep car)

DA602

(car roof type without suspended ceiling)
Painted steel RAL 7036
(Option: Hairline or Mirror ST/ST)
+ LED light
Direct ventilation



(For wide car)



(For deep car)

DA603

(car roof type without suspended ceiling)
Painted steel RAL 7036
(Option: Hairline or Mirror ST/ST)
+ LED light
Direct ventilation
(proposed for load ≤1150kg)

*All images here are for reference only, and the actual products shall prevail.

Car Ceiling/Handrail/Indication system



HC-001



HC-002



HC-003



HC-102



HC-104



HC-601

Car Wall & Door Materials

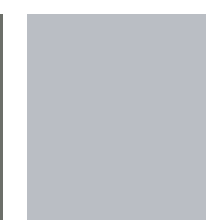
Standard (Painted Steel)



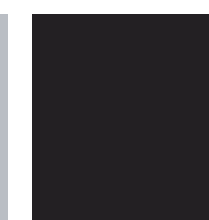
RAL7035



RAL7036



RAL9006



RAL9004



RAL9010



RAL1015



RAL6019

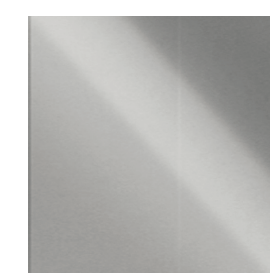


RAL6027

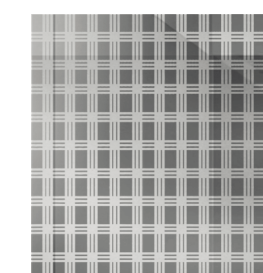
Optional (Stainless Steel)



HS-001
Hairline ST/ST



HS-002
Mirror ST/ST



ES-002
Etched ST/ST



ES-003
Etched ST/ST



ES-004
Etched ST/ST

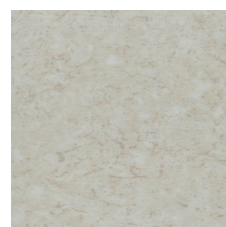


ES-005
Etched ST/ST

*All images here are for reference only, and the actual products shall prevail.

Floor

PVC tile



BN2031

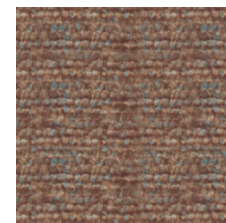


BN2038

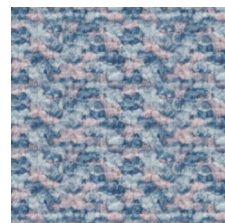


WY9003

Carpet-like style (PVC)



B-308

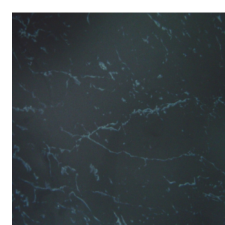


B-358

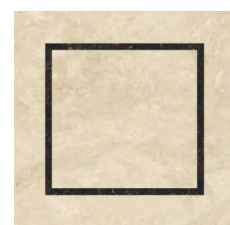
Marble-like style (PVC)



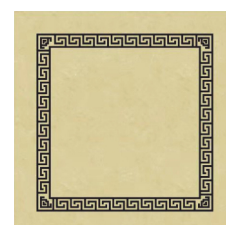
S7704



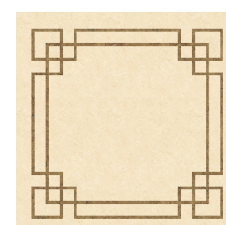
S7708



DP-001



DP-002



DP-003



DP-004



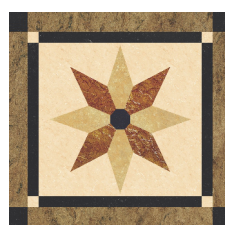
DP-005



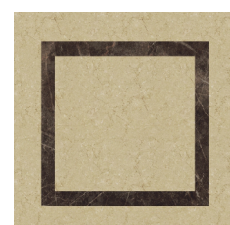
DP-006



DP-007

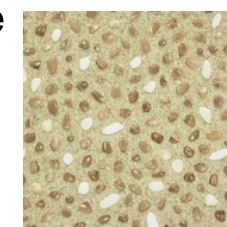


DP-008



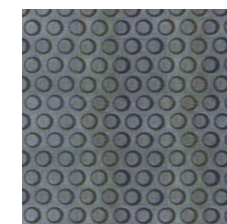
DP-009

Embossed Stone Style (PVC)

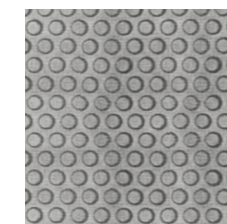


ES-2

Rubber Floor



Black



Gray

Checked Metal Floor

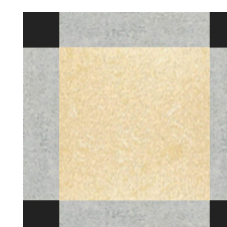


Checked Aluminum

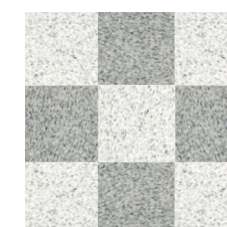


Checked ST.
(painted)

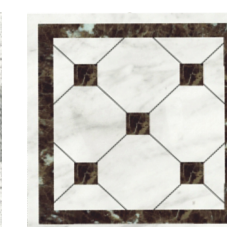
Marble Floor



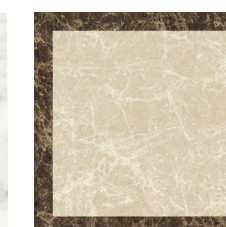
D-001



D-002



D-003



D-004

*All images here are for reference only, and the actual products shall prevail.

CLASSIC COP

COB050 for Front Wall



▲
FOB340



CLASSIC COP

COB070 for Side Wall



▲
FOB340

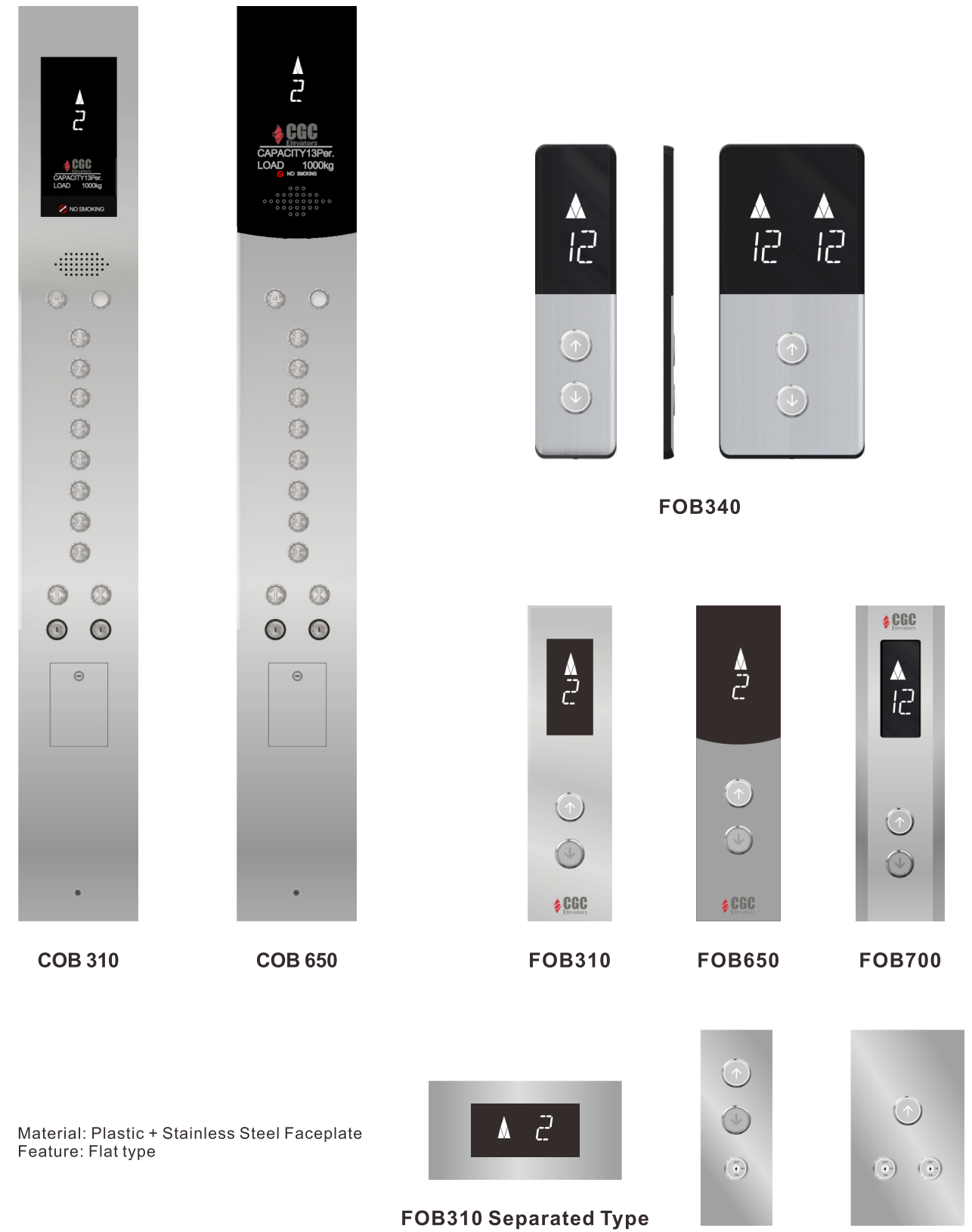


Material: Stainless Steel Faceplate
Feature: Full height type;
Customizable (faceplate
material, display, buttons)



*All images here are for reference only, and the actual products shall prevail.

Note: "Stainless Steel" mentioned above is Natural color Hairline Stainless Steel as standard.
Standard Display is Segment LED. Please contact us if you have customized requirements.



Material: Plastic + Stainless Steel Faceplate
Feature: Flat type

Auxiliary COP for disability ▼



CD-400

Material: Stainless Steel Faceplate
Feature: Auxiliary COP; Extruded type; EN81-70 available

*All images here are for reference only, and the actual products shall prevail.

COP Feature ▼

COB	Segment LED	Dot-Matrix LED	Colored LCD	Customized Size	EN81-70
COB050	●	○	○		
COB070	●	○	○		○
COB310	●	○	○	○	○
COB650	●	○			○
CD-400				○	●

NOTE:

Please contact us about your requirements in advance. Some extra functions (such as access control, extra keys, huge size buttons, etc.) may cause the Max.Floor reduced, or COP size customized. However, some types can't be customized.

Colored LCD includes 7 inch, 8 inch, 10 inch as options

○ Non-standard design / not always available. Please contact us about your requirements in advance.

FOB Feature ▼

FOB TYPE	Insallation Meathod	One for One lift			
		Segment LED	Dot-Matrix LED	Colored LCD (4.3")	Customized Size
FOB340	Mounted on Wall	●	○		
FOB310	Inserted in Wall	●	○	○	○
FOB310 Separated	Inserted in Jamb	●	○	○	○
FOB650	Inserted in Wall	●	○	○	
FOB700	Mounted on Wall	●	○	○	○

FOB TYPE	Insallation Meathod	One for Two lifts			
		Segment LED	Dot-Matrix LED	Colored LCD (4.3")	Customized Size
FOB340	Mounted on Wall	●	○		
FOB310	Inserted in Wall	●	○	○	○
FOB310 Separated	Inserted in Jamb	●	○	○	○
FOB650	Inserted in Wall	●	○	○	
FOB700	Mounted on Wall	●	○	○	○

FOB TYPE	Insallation Meathod	Separate type		
		Dot-Matrix LED	Colored LCD (4.3")	Customized Size
FOB340	Mounted on Wall	N/A	N/A	N/A
FOB310	Inserted in Wall	●		○
FOB310 Separated	Inserted in Jamb	●		○
FOB650	Inserted in Wall	N/A	N/A	N/A
FOB700	Mounted on Wall	●		○

Please contact us about your requirements in advance. Some extra functions (such as hall arriving gong device, extra keys, huge size buttons, etc.) may cause FOB size customized. However, some types can't be customized.

○ Non-standard design / not always available. Please contact us about your requirements in advance.

DISPLAY for COP ▼



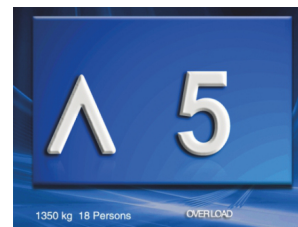
Segment LED



Dot-Matrix LED



7 inch
colored LCD



8 inch/10 inch
colored LCD

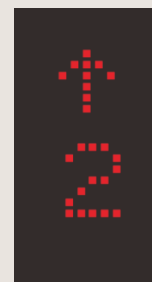


Media LCD

DISPLAY for FOB ▼



Segment LED





Dot-Matrix LED



4.3 inch
colored LCD

NOTE: Segment LED is as standard.
*All images here are for reference only, and the actual products shall prevail.

BOTTON ▼

Relief marking with brushed stainless steel finish	BC001		
	BS001		

NOTE:BC001 is as standard.Buttons in different illumination colors available.
*All images here are for reference only, and the actual products shall prevail.

HALL LANTERN ▼



DZD-1



DZD-2



DZD-3

Hall Lantern Type	Faceplate Size
DZD-1	100*260mm
DZD-2	100*260mm
DZD-3	90*340mm

NOTE:Faceplate material is Hairline Stainless Steel as standard.
The color of lantern, material of faceplate can be customized.

Standard Function

Function	Description
Direct travel leveling	The system automatically calculates and generates the running curves based on the distance, enabling the elevator to directly stop at the leveling position without creeping.
Automatic generation of optimum curve	The system automatically calculates the optimum speed curve compliant with the human-machine function principle based on the distance, without being limited by the number of curves or short floor.
Motor auto-tuning	With simple parameter setting, the system can obtain the motor parameters no matter whether the motor is with-load or without load.
Shaft learning	Shaft learning is required before first-time automatic running. During shaft learning, the elevator runs from the bottom floor to the top floor at the inspection speed and automatically records all position signals in the shaft.
Re-running automatically when elevator is re-powered	Elevator will get into normal service automatically without manual operation after power resume.
Floor position auto-correction	Every time when elevator pass leveling plate, floor position pulse will be corrected to theory value got from shaft learning.
Car location adjusted automatically	Every time the elevator runs to the terminal floor, the system automatically checks and corrects the car position information based on slow-down switch 1, and eliminates over travel top terminal or bottom terminal with use of the slow-down switches
Automatic startup torque compensation	The system automatically implements startup torque compensation based on the current car load, achieving smooth startup and improving the riding comfort.
Running times recording	In automatic running state, the system automatically records the running times of the elevator.
Running time recording	The system automatically records the accumulative working hours of the elevator.
Over voltage protection	Once power source voltage exceeds 120%, the motor will be protected against damages.
Phase trip protection	Once power supply is short of any phase or phase reversed, the motor will be protected against damages
Over current protection	Once current output to motor is over a set value, the motor will be protected against damages.
Motor over heat protection	Once motor winding temperature is over a set value, the motor will be protected against damages.
Encoder trip protection	Once encoder has fault, the motor will stop running immediately.
Contact stuck protection	System will monitor the contacts of contactors, if abnormal, the next running will not be allowed until the problem is resolved.
Bidirectional over speed protection	Once lift is running under over speed, lift will be stopped by electrical control system immediately.
Running direction reversal protection	Once the running direction monitored by encoder is not same as actual running direction, lift will stop running immediately.
Travel over time protection	During normal mode running, if leveling sensor signal does not feedback to control system over the set time, motor power will be cut to prevent motor working under abnormal situation.
Final terminal protection	Prevent the elevator from traveling beyond a terminal landing.
Car overload protection	When car load exceeds rated load, lift will hold stop with door open at the floor and the buzzer alarms and overload lighting illuminated.
Anti door lock bridge	Door locks circuit is always monitored. Once door lock is detected be shorted, the lift will be not possible to start next running under normal mode.
Opposite direction car call cancelled automatically	When elevator runs to terminal floors or running direction changes, all registered opposite direction car call will be cancelled automatically to avoid unnecessary running.
Full-load non-stop running	When car load exceeds 80% of rated load, it ignores all hall calls to avoid useless stop and increase the efficiency of transportation. These ignored calls will be registered but responded in next trip (simplex) or by other lift (group control)
Low-speed re-level in case of some fault	When lift stops at the locking door zone by fault, lift will go to the nearest floor under lower speed and open the door.
Next floor if open door faults	If doors can't be opened or can't be fully opened, the lift will close the door and go to the next floor to open the door.
Warning if stop of door zone	The system gives a prompt when the elevator stops at a non door zone area due to faults.
Emergency illumination in car	When normal lighting power supply fails, car emergency lighting on COP will be illuminated by emergency power source.
Fault data recording	Controller will record latest 11 faults information include fault code, time and floor, and it will record the details of last fault.
Emergency alarm	When passenger trapped in car, press the button, the buzzer will alarm.
Automatic car fan	Car fan will be shut down automatically if no more calls are registered after a set time.
Automatic car lighting	Car lighting will be shutdown automatically if no more calls are registered after a set time.
Fire return feedback	Control system could output a signal to building fire alarm system when car reach nominated floor.
Floor number display settable	Floor display number could be set by 0-9, and English letter A-Z (1 and O not available on some type display).
Automatic returning to parking floor	If no call during a set time, car will return to nominated main floor and wait for new calls.
Car fan manually control	Car ventilation fan could be turned on or off by this key switch on COP. It will be moved into "COP Window" when "COP Window" optional function is selected.

Alternative and Optional Function

Function	Description
Car lighting manually control	turn on/off the power supply of car lighting
Attendant Operation	Lift will be operated by an attendant.
Attendant Non-stop	Under attendant operation, press this button, lift will ignore hall calls and go to the nearest registered car call floor.
Door open holding button in attendant window	The door keeps open for a set time (adjustable, maximum 1000S) after press this button.
Independent running	When IND switch is turned to "ON", landing calls will be ignored and only car call will be responded. After all car call is responded, car door will be kept opened.
Car call anti-nuisance	Once the registered car calls number is more than 3 plus the passenger numbers weighed by weighting device, all the car calls will be cancelled automatically.
Landing service upon time	It can flexibly set the time periods and corresponding service floors.
Peak service	If car call over 3 from peak service floor during peak service time, elevator will get into peak service, and car call of peak service floor will be always registered, and elevator will return this floor at idle time.
Settable door open time	Door open and close time are automatically adjusted depending on whether the call cause the door open and close is a car call or hall car or door call.
Automatic by-pass jammed hall button	If a hall button is jammed mechanically, this hall call will be automatically bypassed after being served once, until the problem is resolved.
Security floor	During the night security period, the elevator runs to the security floor first every time, opens and closes the door once, and then runs to the target floor.

Function	Description
Arrival gong on car (proposed)	When car arrivals, the audible signal will be given from gong on car top to notice the passengers in the car (different sound for UP and DN). When optional function "Voice synthesizer" is selected, this function is not needed.
Shaft lighting	The shaft will be provided with permanently installed electric lighting.
Arrival gong on landing (customized)	When car arrivals, gong on landing will give the audible signal to notice the waiting passengers on landing (different sound for UP and DN). The gong could be amounted on landing.
Remote shutdown interface	Lift could supply an input interface (remote signal should be dry contact) for parking function, and user could use remote parking switch to put lift out of service or put it into service.
VIP service	One floor can be defined as VIP floor. Landing call of VIP floor will be responded priority to other landings' call.
Video cable in traveling cable	The cable is used for video camera (by others) installed in the car. Cable could be Co-axial cable or CAT5 network cable.
Landing door lock double circuits checked	Landing door main contacts and hall door vice contacts are monitored separately.
Fire return by building fire system	When lift receives a fire alarm signal from the building fire alarm system, it will stop running and directly return to nominated floor with door fully opened and out of normal service.
Audio cable in traveling cable	The cable is used for audio broadcaster (by others) installed on car top.
Earthquake protection	If lift receives earthquake signal, it will stop at nearest floor and open door to free the passenger.
Hall lantern,	It indicates passengers waiting at a floor about the travel direction of arriving car.
Shaft cable trunk	Shaft cable trunk could be Plastic trunk or Metal trunk (required in case of steel shaft).
Check door lock bridge before exit inspection	When control system switch from inspection mode to normal mode, door lock circuit need to open once, otherwise, control will stay at inspection mode.
Power saving device (regenerative driver)	This device will feedback the energy produced by lift system to the power supply. It could save power about 30% depending on different type and capacity of lift.
Fireman service (phase II)	When fire happened, the lift will be operated by fireman(s), operation controls follow EN81-72.
Car call cancelable	False car call could be cancelled by press the same floor button twice continuously.
Parking key switch	2-position switch on FOB of nominated floor. On "STOP" potion, all registered calls will be cancelled and the lift will go to nominated floor with door open, then close the door and out of service. The cancelled calls will be registered on other lift (if group control). On "RUN" position, lift will be turned back to service.
Fire return switch (Phase I),	When fire return switch is activated, lift will stop running and directly return to nominated floor with door fully opened and out of normal service.
Remote manual brake release	For MRL lift, brake can be opened remotely by mechanical or electrical device.
ARD (Automatic rescue device while power off)	When power failure, lift will go to the nearest possible floor, open the door and release the passengers automatically. This is a standard function for MRL solution.
UCMP	Unintended car movement protection
Automatic re-leveling	Car move up or down at unlocking zone with door opened to keep leveling accuracy
Pre-opening door	Door will open in advance during stopping to the level.
Button with tactile, Braille, and sound	Push button follows EN81-70
Disability COP	Position of push buttons and indicator follow EN81-70
Voice announcer	Audio information of car operation (arriving floor & running direction) will be announced to passenger. English language as standard, if other foreign language required, voice document in MP3 format should be supplied.
Handrail HC-104	Position and type of handrail follows EN81-70.
Mirror (half height) on rear wall	For wheelchair user to observe obstacles behind them when moving backwards out of the car
Disability FOB	Position of push buttons and indicator follow EN81-70. The indicator shall be separated type, height 1.8-2.5m from floor.
Selective collective	Standard: Full collective (UP & DN hall call buttons on FOB) Option: Down collective (DN hall call button on FOB)
Access control (Security control)	Only after register by IC card, the call(s) could be registered. Which means lift can't be used by passenger without IC card.
Interphone	Standard: 5-terminal: monitoring room, machine room, car top, car and pit. Option: 3-terminal: machine room, car and main floor. If interphone provided by others, the interface will be reserved as required. Note: If 4 or more lifts share one monitoring room, center management phone will be used in monitoring room. In case of 4 to 22 lifts, each lift should have a cable from control panel to monitoring room. In case of 23 to 254 lifts, all lifts control panel interphones should be connected into BUS system and then to monitoring room. Cable from control panel interphone to monitoring room is by others. Please consult factory regarding cable specification.
Door safety device	Standard: 2D light curtain Option: a. 3D light curtain, b. 2D light curtain with safety edges, c.3D light curtain with safety edges
Remote monitoring	
4 dry contact interface	System could supply 4 dry contacts to output the basic signals of lift operation including AUTO, INSPECTION, FAULT and PARKING for remote monitoring.
RS485 interface	Lift could supply a RS485 or Intranet communication interface to output all signals of lift operation for remote monitoring. Signals include: 1. status of lift (auto, parking, inspection, fault, fire return, fireman service drive control, attendant, independent, overload, full load, arrival) 2. car location and running direction (floor No., UP, DN, STOP) 3. status of doors (open, fully open, close, fully close) 4. car door position (unlocking zone, locking zone) 5. fault information (fault time, fault reasons)
Remote monitoring system	Monitoring system based on RS485 interface. Same monitor information as RS485 interface. SJEC provide monitoring hardware and monitoring software in PC. Cables between elevator and monitoring room and PC by customer.